

George Adams

ESTATE AGENTS



294G Stretford Road, Manchester, M15 5TN

£1,300 PCM



Available 11th July 2026

A luxury top floor, two double bedroom apartment now available in Hulme right next to Hulme Park.

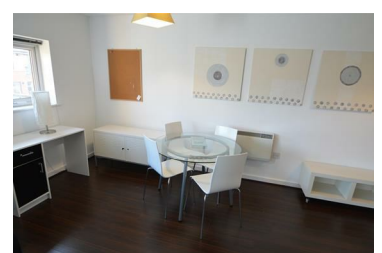
The property boasts a huge open plan lounge/dining area with a balcony running the length of the apartment, kitchen with integrated appliances including dishwasher, two double bedrooms, and bathroom with shower over bath.

Secure parking to the rear.

Local buses run from directly outside the property into the city centre and to the universities every 5 minutes all week. Deansgate and Oxford Road both a 15 minute walk away.

NO COMPANY OR CORPORATE LETS.

- Fitted Kitchen
- Open Plan Living/Dining Area
- Furnished Property
- Electric Panel Heaters
- Large Balcony
- Secure Parking Space
- Top Floor
- Close to Supermarket & University
- Bills Inclusive Package Available
- No Pets or Smokers



Unit 1 Bishops Corner, 321 Stretford Road, Hulme, Manchester, M15 4UW
Tel: 01612262288 Email: enquiries@georgeadamsestateagents.co.uk www.altosoftware.co.uk